



public works
& infrastructure

Department:
Public Works and Infrastructure
REPUBLIC OF SOUTH AFRICA

C I B E

COUNCIL
FOR THE BUILT
ENVIRONMENT

BRIEFING PACK

BUILT ENVIRONMENT CLIMATE CHANGE INDABA

*“Co-creation of spaces and places
that respond to a just transition”*



7-8 NOVEMBER 2024



SIBUSISIWE HALL, MANDENI,
SUNDUMBILI, KWAZULU NATAL

SAA TRAVEL DISCOUNT PROMOTION:
RULE: BECC | ACCOUNT CODE: BECC24
PROMO CODE: BECC24
SELLING PERIOD:
01/09/2024 TO 30/11/2024

Our Partners





BRIEFING NOTES

Purpose

To appraise you about the upcoming Council for the Built Environment's Built Environment Climate Change Indaba scheduled for the 07-08 November 2024 at the Sibusisiwe Hall in Mandeni Local Municipality, KwaZulu-Natal.

Background

The Built Environment Climate Change Indaba is a direct response to the pressing challenges. Its focus is to bring together stakeholders from various sectors to co-create sustainable, resilient, and equitable spaces that address climate change and socio-economic disparities. The Indaba is particularly critical in the context of the Council for the Built Environment's (CBE) mandate to transform the built environment, promote sustainable development, and contribute to inclusive socio-economic growth.

The theme of the Indaba, "Co-creation of spaces and places that responds to just transition". It reflects the need for a collaborative and inclusive approach to climate resilience. It aligns with the country's broader goals of addressing climate change while ensuring social equity, economic opportunity, and environmental sustainability in the built environment sector.

The 2024 BECC Indaba is centered around building a climate resilient Built Environment for South Africa while acknowledging and incorporating the Indigenous Knowledge Systems (IKS) in the entire construction lifecycle, process and legislation of national, provincial and national government.

Rationale: Why Mandeni

Until now, severe flooding and mudslides in KwaZulu-Natal, particularly affecting Durban and surrounding areas, have impacted thousands of people in the region which was declared a state of disaster by President Cyril Ramaphosa. The South African Weather Service (SAWS) issued escalating warnings, ultimately reaching Level 9 due to the severity of the conditions. More than 440 people died, with some still missing. These natural disasters are worsened by poor drainage and building standards, especially in low-income areas. Significant damage included over 13,000 homes, disrupted water supply, impassable roads, and destroyed bridges.

Mandeni Local Municipality, located on the North Coast of KwaZulu-Natal, is one such area which faces significant challenges due to recent climate disasters, particularly floods, that have disproportionately impacted its vulnerable communities. These disasters have exposed the fragility of the built environment, leaving homes, infrastructure, and livelihoods in disrepair. Vulnerable groups, such as low-income families and rural communities, often bear the brunt of these climate shocks due to inadequate housing, poor infrastructure, and limited access to resources.



BRIEFING NOTES

From Calm to Chaos: The Striking Contrast Before and After the Floods

BEFORE



AFTER





BRIEFING NOTES

Objectives

The main objective of the BECC Indaba is to bring together different stakeholders under one roof to discuss and enhance climate resilience in South Africa's built Environment by fostering collaboration among to generate new knowledge and insight geared towards reducing and mitigating the impact of climate change in the sector.

- Provide a platform for collaboration and sharing of knowledge among communities, industry, academia and the public and private sectors.
- Interrogate challenges and possible recommendations and/or solutions from multi-dimensional perspectives.
- Track progress of the implementation plan agreed to at the 2023 BECC Indaba.

Outcomes

The outcomes and resolutions from the BECCI 2024 are expected to feed into the operations and functions of the CBE's and its stakeholders on numerous levels. Furthermore, the envisaged BECCI will aim at addressing Climate Change related challenges facing the South African Built Environment and vulnerable communities at large.

- To enable the Built Environment Professionals to contribute in the country's Climate Change discourse.
- Establish a collaborative platform for knowledge sharing among communities, industry, academia, and both public and private sector
- Examine challenges and propose recommendations/solutions from various perspectives.
- Monitor the annual progress of measures and interventions aimed at mitigating climate change impacts in the South African Built Environment.
- Deliver a progress report on the actions identified during the previous BECC Indaba

Targeted Audience

The 2024 Built Environment Climate Change Indaba will be graced by the presence of several key stakeholders. Notably, the Presidential Climate Commission, the Presidents and Chairpersons of the Councils for the Built Environment Professions, Leaders from the Cooperative Governance and traditional affairs portfolio, Captains of Industry including Managing Directors and Presidents of Voluntary Associations (such as Consulting Engineers South Africa, the South African Institute of Architects, the Association of South African Quantity Surveyors amongst others), private firms and practices in the Built Environment. Additionally, leaders in key policy custodian Departments such as the Department of Public Works and Infrastructure, the Department of Human Settlements, the National Disaster Management Centre, South African Local Government Association, Department of Transport amongst others.



BRIEFING NOTES

Order of Proceedings

DAY 1: 07 NOVEMBER 2024

Procedural and Address by the Principals

- Welcome and Opening by the District/Local Municipality
- Purpose of the Engagement
- Keynote Address: "Turning South Africa into a Climate Change Resilient Construction Site" by the Minister



Setting the Tone

- Reflection on Climate Change in the Built Environment Sector and the 2023 BECCI Report by the CBE CEO
- Building a more resilient KZN, capable of effectively responding to and mitigating the impacts of climate change by the District/Local Municipality

Thematic Area 1

Regulatory, Policy Environment and Built Environment Education that Supports a Just Transition

This session will focus on creating an enabling regulatory framework that promotes a sustainable, low-carbon built environment. Topics will include:

- Building standards and guidelines for resilient and sustainable infrastructure development.
- Public sector procurement frameworks aimed at decarbonization.
- Climate financing opportunities and incentives for local governments and communities.
- Infrastructure policy review, identifying gaps, limitations, and opportunities for collaboration.
- Climate Change Act: Impact and Adaptation



BRIEFING NOTES

Thematic Area 2

Increased Knowledge and Capacity to Plan, Design, and Deliver a Resilient Built Environment

Climate-resilient infrastructure requires specialized skills and expertise across multiple sectors. This session will cover:

- The development of climate-smart infrastructure design skills.
- Research into the built environment and climate change capacity needs.
- Education and awareness programs to help vulnerable communities better understand and respond to climate impacts.
- Mainstreaming Indigenous Knowledge Systems into the built environment through research and education.

Panel: Construction Education Training Authority's Climate Change Perspective

- Equipping Youth with the Necessary Training to Combat Climate Change (Green Leaders of the Future)

Elevator Pitches for Day 1:

- Strategies to Build Resilient Communities to Combat Environmental Challenges including Climate Change
- The role of sustainable water management is crucial in mitigating climate change and adaptation.

DAY 2: 08 NOVEMBER 2024

Recap of Day 1 and Agenda for Day 2

Why Climate Change Conversation Matter to Local Government

Thematic Area 3

Improved Community Resilience to Climate Change and Disaster Management Capacity (Localisation of the Climate Change Discourse)

Vulnerable communities need to be empowered to withstand climate shocks.

This session will focus on:

- Enhancing technical disaster response and mitigation capacity.
- Incorporating Indigenous Knowledge Systems in disaster mitigation strategies.
- Creating Standard Operating Procedures (SOPs) for rebuilding post-disaster, with a focus on quick recovery and community involvement.
- Building the leadership capacity of community leaders to actively support disaster management.



BRIEFING NOTES

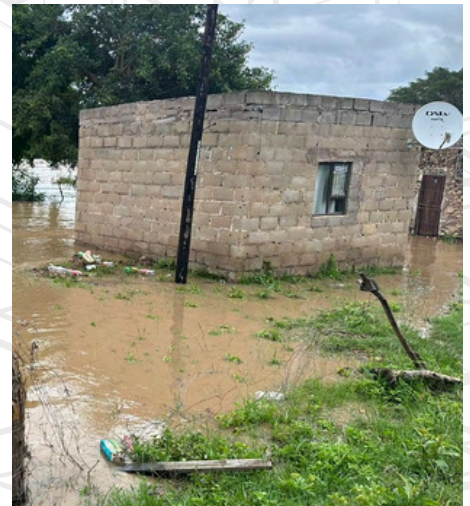


Elevator Pitches for Day 2:

- Integrating Climate Resilience into Spatial Planning and Land Use: Strategies for Mitigating the Impact of Climate Change in Urban and Rural Development
- Building Climate-Resilient Communities: Approaches to strengthen community resilience against climate impacts.
- Building Disaster Management Capacity
- Integrating Climate Related Risks into the Financial Systems Stability Framework
- Ecological Infrastructure, Climate Change Adaption and Response
- Resilient Infrastructure and Standards

Requested Principals

1. **The Executive Mayor of Mandeni Local Municipality:** Opening Address
2. **The Deputy Mayor of Mandeni Local Municipality:** Why Climate Change Conversation Matter to Local Government
3. **The Speaker of Mandeni Local Municipality:** Closing Remarks
4. **The Chairperson of the KZN Provincial Working Group on Environmental Planning & Climate Resilience:** A South African Local Government Association Perspective
5. **The Deputy Minister of Public Works and Infrastructure:** "Our Commitment to Combating Climate Change"





public works
& infrastructure

Department:
Public Works and Infrastructure
REPUBLIC OF SOUTH AFRICA

20 YEARS OF CBE
"Past, present, and future mirror"

C | B | E

COUNCIL
FOR THE BUILT
ENVIRONMENT



2024 BUILT ENVIRONMENT CLIMATE CHANGE INDABA

*"Co-creation of spaces and places
that respond to the Just Transition"*

OUR SPEAKERS:



public works
& infrastructure
Department:
Public Works and Infrastructure
REPUBLIC OF SOUTH AFRICA



PROVINCE OF KWAZULU-NATAL
ISIFUNDAZWE SAKWAZULU-NATALI



OFFICE OF THE KING
KWAZULU-NATAL



ILEMBE
DISTRICT MUNICIPALITY
PROVINCE OF KWAZULU-NATAL



MANDENI
LOCAL
MUNICIPALITY



Cooperative Governance
Traditional Affairs



Environmental Assessment
Practitioners Association
of South Africa



WSU
WATER SERVICES USER'S FORUM



rural development
& land reform
Department:
Rural Development and Land Reform
REPUBLIC OF SOUTH AFRICA



forestry, fisheries
& the environment
Department:
Forestry, Fisheries and the Environment
REPUBLIC OF SOUTH AFRICA



OVERBERG WATER BOARD



UNIVERSITY OF
KWAZULU-NATAL
INYUVESI
YAKWAZULU-NATALI



OUR PARTNER:



SOUTH AFRICAN AIRWAYS



MISA
MUNICIPAL INFRASTRUCTURE
SUPPORT AGENT



CETA
CONSTRUCTION EDUCATION AND TRAINING AUTHORITY



FEM
MAKING A MEANINGFUL DIFFERENCE

